

**DEPARTMENT OF THE ARMY TECHNICAL MANUAL**

---

**ORGANIZATIONAL MAINTENANCE REPAIR PARTS  
AND SPECIAL TOOLS LISTS  
SIGNAL GENERATORS  
TS-155A/UP, TS-155B/UP (FSN 6625-192-5085);  
TS-155C/UP (FSN 6625-643-1589); AND  
TS-155E/UP (FSN 6625-649-5257)**

**Headquarters, Department of the Army, Washington, D.C.  
28 March 1975**

*Current as of December 1974*

	Paragraph	Page
SECTION I. INTRODUCTION		
Scope .....	1-1	2
General .....	1-2	2
Explanation of columns .....	1-3	2
Special information .....	1-4	4
Location of repair parts .....	1-5	4
Abbreviations (Not applicable) .....	1-6	4
Reporting of equipment publication improvements .....	1-7	5
II. PRESCRIBED LOAD ALLOWANCE (Not applicable)		
III. REPAIR PARTS LIST .....		6
IV. SPECIAL TOOLS, TEST AND SUPPORT EQUIPMENT (Not applicable)		
V. INDEX - FEDERAL STOCK NUMBER AND REFERENCE NUMBER (ROSS REFERENCE TO FIGURE AND ITEM NUMBER .....		11

**\*This manual supersedes so much of SIG 7 & 8 TS-155/UP, 13 September 1958, including all changes, as pertains to organizational repair parts lists.**

# SECTION I.

## INTRODUCTION

### 1-1. Scope

This manual lists repair parts and special tools required for the performance of organizational maintenance of the TS-155A/UP, TS-155B/UP, TS-155C/UP, and TS-155EUP.

The PCCN for the equipment is GTEAHT for all models.

### 1-2. General

This repair parts and special tools list is divided into the following sections:

**a. Prescribed Load Allowance (PLA) - Section II.**

Not applicable.

**b. Repair Parts List - Section III.** A list of repair parts authorized for the performance of maintenance at the organizational level. This repair parts list is arranged in alphabetical order.

**c. Special Tools, Test and Support Equipment -- Section IV.** Not applicable.

**d. Index - Federal Stock Number and Reference Number Cross-Reference to Figure and Item Number - Section V.** A list, in ascending numerical sequence, of all Federal stock numbers appearing in the listings, followed by a list in alphanumeric sequence, of all reference numbers appearing in the listings. Federal stock number and reference numbers are cross-referenced to each illustration figure and item number or reference designation appearance.

### 1-3. Explanation of Columns

The following provides an explanation of columns in the tabular lists --

**a. Source, Maintenance, and Recoverability Codes (SMR).**

(1) **Source code.** Indicates the manner of acquiring support items for maintenance, repair, or overhaul of end items. Source codes are

Code	Explanation
PA	Item procured and stocked for anticipated or known usage.
PP	Item procured and stocked for insurance purposes because essentiality dictates that a minimum quantity be available in the supply system.
PC	Item procured and stocked and which otherwise would be coded PA except that it is deteriorative in nature.
PD	Support item, excluding support equipment, procured for initial issue or outfitting and

Code	Explanation
	stocked only for subsequent or additional initial issues or outfittings. Not subject to automatic replenishment.
PE	Support equipment procured and stocked for initial issue or outfitting to specified maintenance repair activities.
PF	Support equipment which will not be stocked but which will be centrally procured on demand.
PG	<b>Item</b> procured and stocked to provide for sustained support for the life of the equipment. It is applied to an item peculiar to the equipment which because of probable discontinuance or shutdown of production facilities would prove uneconomical to reproduce at a later time.
KD	An item of depot overhauls/repair kit and not <b>purchased separately. Depot kit defined as a kit that provides items required at the time of overhaul or repair.</b>
KF	<b>An item of a maintenance kit and not purchased separately. Maintenance kit defined as a kit that provides an item that can be replaced at organizational or direct support or general support levels of maintenance.</b>
KB	<b>Item included in both a depot overhaul/repair kit and a maintenance kit.</b>
MO	<b>Item to be manufactured or fabricated at organizational level.</b>
MF	<b>Item to be manufactured or fabricated at direct support maintenance level.</b>
MH	<b>Item to be manufactured or fabricated at general support maintenance level.</b>
MD	<b>Item to be manufactured or fabricated at depot maintenance level.</b>
AO	<b>Item to be assembled at organizational level.</b>
AP	<b>Item to be assembled at direct support maintenance level.</b>
AH	<b>Item to be assembled at general support maintenance level.</b>
AD	<b>Item to be assembled at depot maintenance level.</b>
CA	<b>Item is not procured or stocked because the requirements for the item will result in the replacement of the next higher assembly.</b>
XD	<b>Item is not procured or stocked. If not available through salvage, requisition.</b>
XC	<b>Installation drawing, diagram instruction</b>

**Code**                      **Explanation**  
**sheet, field service drawing**, that is identified by manufacturers' part number.  
**XD — Support items** can be requisitioned with justification.

**NOTE**

Cannibalization or salvage may be used as a source of supply for any items source coded above except those coded XA and aircraft support items as restricted by AR 700-42.

(2) **Maintenance code.** Maintenance codes are assigned to indicate the levels of maintenance authorized to USE and REPAIR support items. The maintenance codes are entered in the third and fourth positions of the Uniform SMR Code Format as follows -

(a) **Use (third position).** The maintenance code entered in the third position indicates the lowest maintenance level authorized to remove, replace, and use the support item. The maintenance code entered in the third position indicates one of the following levels of maintenance.

<b>Code</b>	<b>Application</b>
<b>O -</b>	Support item is removed, replaced, used at the <b>organizational level</b> of maintenance.

**NOTE**

A code "C" may be used in this position to denote crew or operator maintenance performed within organizational maintenance.

<b>F -</b>	Support item is removed, replaced, used at the direct support maintenance level.
<b>H -</b>	Support item is removed, replaced, used at the general support maintenance.
<b>D -</b>	Support items that are removed, replaced, used at depot only.

(b) **Repair (fourth position).** The maintenance code entered in the fourth position indicates whether the item is to be repaired and identifies the lowest maintenance level with the capability to perform complete repair (i.e., all authorized maintenance functions). When a maintenance code is not used a dash (-) sign is entered. For multi-service equipment/systems or when a code is entered, this position will contain one of the following maintenance codes as assigned by the service(s) that require the code -

<b>cod?</b>	<b>Application/Explanation</b>
<b>O -</b>	The lowest maintenance level capable of complete repair of the support item is the <b>organizational level</b> .
<b>F - -</b>	The lowest maintenance level capable of complete repair of the support item is direct support.

<b>Code</b>	<b>Application/Explanation</b>
<b>H -</b>	The lowest maintenance level capable of complete repair of the support item is general support.
<b>D -</b>	The lowest maintenance level capable of complete repair of the support item is the depot level.
<b>L -</b>	Repair restricted to designated Specialized Repair Activity.
<b>Z -</b>	Non-repairable. No repair is authorized.
<b>B -</b>	No repair is authorized. The item may be reconditioned by adjusting, lubricating, etc., at the user level. No parts or special tools are procured for the maintenance of this item.

(3) **Recoverability code.** Recoverability codes are assigned to support items to indicate the disposition action on unserviceable items. The recoverability code is entered in the fifth position of the uniform SMR Code Format as follows -

<b>Code</b>	<b>Explanation</b>
<b>Z -</b>	Nonrepairable item. When unserviceable, condemn and dispose at the level indicated in the first digit of the maintenance code.
<b>O -</b>	Repairable item. When uneconomically repairable, condemn and dispose at organizational level.
<b>F -</b>	Repairable item. When uneconomically repairable, condemn and dispose at the direct support level.
<b>H -</b>	Repairable item. When uneconomically repairable, condemn and dispose at the general support level.
<b>D -</b>	Repairable item. When beyond lower level repair capability, return to depot. Condemnation and disposal not authorized below depot level.
<b>L - -</b>	Repairable item. Repair, condemnation, and disposal not authorized below depot/Specialized Repair Activity level.
<b>A -</b>	Item requires special handling or condemnation procedures because of specific reasons (i.e., precious metal content, high dollar value, critical material or hazardous material).

b. **Federal Stock Number.** Indicates the Federal stock number assigned to the item.

**NOTE**

For requisitioning purposes, the Federal stock number must be converted to the National stock number by adding "00" after the Federal stock classification (FSC) code (first four digits). For example, FSN 6625-553-0142 converts to NSN 6625-00-553-0142.

c. **Description.** Indicates the Federal item name and a minimum description required to identify the item. The last line indicates the reference number follow@ by the applicable Federal Supply Code for Manufacturer (FSCM) in parentheses. The FSCM is used as an element in item identification to designate manufacturer or distributor or Government agency, etc., and is identified in SB 708-42.

d. **Unit of Measure (U/M).** Indicates the standard or basic quantity by which the listed item is used in performing the actual maintenance function. This measure is expressed by a two-character alphabetical abbreviation; e.g., ea, in, pr, etc., and is the basis used to indicate quantities and allowances in subsequent columns. When the unit of measure differs from the unit of issue, the lowest unit of issue that will satisfy the required units of measure will be requisitioned.

e. **Quantity Incorporated in Unit.** This column indicates the quantity of the item used in the equipment. Subsequent appearances of the same item in the same assembly are indicated by the letters "REF".

**f. 15-Day Organizational Maintenance Allowance.**

(1) The repair parts indicated by an asterisk in the allowance column represent those authorized for use at the organizational category, and will be requisitioned on an "as required" basis, until stockage is based on demand in accordance with AR 710-2.

(2) Major Army commanders are authorized to approve reduction in the range of support items authorized for use in units within their commands. Recommendations for increase in range of items authorized for use will be forwarded to Commander, US Army Electronics Command, ATTN: AMSEL-MA-DM, Fort Monmouth, NJ., 07703. Any changes approved will be reflected in a revision to the RPSTL.

(3) Allowance quantities are indicated in the special tools list section for special tools, TMDE, and other equipment.

g. **Illustration.** This column is divided as follows:

(1) **Figure number.** Indicates the figure number of the illustration on which the item is shown in TM 11-2657 for TS-155A/UP, TM 11-2657B for TS-155B/UP, and TM 11-2657C for TS-155C/UP and TS-155E/UP.

(2) **Item number.** Indicates the item number or reference designation used to reference the item in the illustration.

1-4. Special information

a. Usable on codes are included in column 3. Uncoded items are applicable to all models. Identification of the usable on codes used in this publication are -

code	<i>Used on</i>
BWS	TS- 155A/UP
BWT	TS-155B/UP
BWU	TS-155C/UP
BWV	TS-155E/UP

b. The following publications pertain to the equipment and its components:

TM 11-2657	Signal Generator TS-155/UP and TS-155A/UP.
TM 11-2657B	Signal Generator TS-155B/UP.
TM 11-2657C	Signal Generators TS-155C/UP and TS-155E/UP.

1-5. Location of Repair Parts

a. **This manual contains one** cross-reference Index (sec V) to be used to locate a repair part when either the Federal stock number or reference number (manufacturer's part number) is known. The first column in the index is prepared in numerical or alphanumeric sequence in ascending order. The reference numbers (manufacturer's part numbers) are listed immediately following the last listed Federal stock number in the index of Federal stock numbers.

b. When the Federal stock number or reference number is known, follow the procedures given in (1) and (2) below.

(1) Refer to the index of Federal stock numbers (sec V) and locate the Federal stock number or reference number. The FSN and reference number are cross-referenced to the applicable figure and item number or reference designation.

(2) Refer to the repair parts list (sec III) and locate the figure number (col 7a) and item number or reference designation (col 7b) as noted in the FSN index.

c. **When the figure and item number or reference designation are known, scrutinize columns 7a and 7b of the repair parts list (sec III) until the item is located.**

d. **When the FSN, reference number, figure number, item number and reference designation are not known, scrutinize column 3 of the repair parts list (sec III), which is arranged in alphabetical order.**

**1-6. Abbreviations**

Not applicable.

1-7. Reporting **of Equipment Publication  
improvements**

**The reporting of errors, omissions, and recommendations for improving this publication by the individual user is encouraged. Reports should be submitted on**

DA Form 2028 (Recommended Changes to Publications and Blank Forms) and forwarded direct to Commander, US Army Electronics Command, ATTN: AMSEL-MA-DM, Fort Monmouth, NJ., **07783.**

SECTION III

TM11-6625-327-20P

SMR CODE	FEDERAL STOCK NUMBER	DESCRIPTION	UNIT OF MEAS	QTY. IN UNITS	15-DAY ORGANIZATIONAL MAINTENANCE ALLOW				ILLUSTRATION	
					(a)	(b)	(c)	(d)	(e)	(f)
					1-5	6-20	21-50	51-100	TH. JRE NO.	ITB NO.
XDOZZ		CABLE, POWER W2 CX-337/U 6 FT LG	EA	1	*	*	*	*		M2
XBOZZ		CABLE, POWER, ELECTRICAL 2 No 18 AWG STRANDED CAPER COND. 10 FEET	EA	1						
PAOZZ	5999-244-5150	ZZZZZ (ZZZZZ) CAP, ELECTRICAL NO-REF-DESIG PLASTIC, 5/8 IN. LG X 11/13 IN OS AW/SERRATED EDGE;	EA	1	*	*	*	*		
PAOZZ	5935-199-1806	MKPR (10133) UG28, CONNECTOR, E22 CONNECTS TV? IN PLUGS;	EA	1	*	*	*	*		E22
PAOZZ	5935-199-1806	UG28AU (80058) CONNECTOR, ADAPTER E20 CONNECTS TV N N PLUGS;	EA	1	*	*	*	*		E20
PAOZZ	5935-199-1806	UG28AU (80038) CONNECTOR, ADAPTER E18 CONNECTS TYPE N PLUGS;	EA	1	*	*	*	*		E18
PAOZZ	5935-843-9875	UG28AU (80058) CONNECTOR ADAPTER E21 CONNECTS TYPE N PLUGS, 2 CONT	EA	1	*	*	*	*		E21
PAOZZ	5935-539-0851	UG28AU (80038) CONNECTOR, ADAPTER E23 CONNECTS 2 RF JACKS..	EA	1	*	*	*	*		E23
PAOZZ	5935-539-0051	UG57BU (80038) CONNECTOR, ADAPTER E21 CONNECTS 2 RF JACKS..	EA	1	*	*	*	*		E21
PAOZZ	5935-539-0851	UG57BU (80058) CONNECTOR, ADAPTER E22 CONNECTS 2 RF JACWS	EA	1	*	*	*	*		E22
XDOZZ		UG570U (80058) CONNECTOR, ADAPTER E24 1 RD RACE CONT END,	EA	1	*	*	*	*		E24
XDOZZ		1 RD FEMALE CONT OTHER CONNECTS W/TYPEN FITTINGS;	EA	1	*	*	*	*		F18
XDOZZ		UG1190D (80058) CONNECTOR, ADAPTER E18 1 RD MALE CONT 1 END,	EA	1	*	*	*	*		F18
XDOZZ		1 RD FEMALE CONT OTHER END, CONNECTS W/TYPEN FITTINGS;	EA	1	*	*	*	*		E25
PAOZZ	5935-642-3593	UG11-0B (80058) CONNECTOR, ADAPTER E25 1 RD WALE CONT. END,	EA	1	*	*	*	*		E25
PAOZZ	5935-642-3593	1 RD FEMALE CONT OTHER END, CONNECTS W/TYPEN FITTINGS;	EA	1	*	*	*	*		E21
PAOZZ	5935-642-3593	UG119UP (80058) CONNECTOR, TOP ADAPTER E21 RD MALE CONT 1 END,	EA	1	*	*	*	*		E21
PAOZZ	5935-642-3593	1 RD FEMALE OTHER END, ADAPTS SKL TO N CONNECTORS;	EA	1	*	*	*	*		E17
PAOZZ	5935-642-3593	UG131U (80058) CONNECTOR, ADAPTER E17 1 RD MALE CONT 1 END,	EA	1	*	*	*	*		E17
PAOZZ	5935-642-3593	1 RD FEMALE CONT OTHER END ADAPTER SKL TO N CONNECTORS;	EA	1	*	*	*	*		E20
PAOZZ	5935-149-3914	UG131U (80058) CONNECTOR, ADAPTER F20 1 RD MALE CONT 1 END,	EA	1	*	*	*	*		E20
PAOZZ	5935-149-3534	1 RD FEMALE CONT OTHER END, ADAPTS SKL 70 N CONNECTORS;	EA	1	*	*	*	*		E19
PAOZZ	5935-149-3914	UG131U (80058) CONNECTOR, ADAPTER E19 ADAPTS UHF PLUG	EA	2	*	*	*	*		E19
PAOZZ	5935-149-3534	RECEPTACE, 1 RD MALE CONT 1 END, 1 RD FEMALE CONT OTHER END' STRAIGHT;	EA	2	*	*	*	*		E23
XDOZZ		UG255U (80058) CONNECTOR, ADAPTER E23 ADAPTS UHF PLUG	EA	2	*	*	*	*		E23
PAOZZ	5925-823-0213	RECEPTACE, 1 RD MALE CONT 1 END, 1 SPLIT FEMALE CONT OTHER END;	EA	1	*	*	*	*		
PAOZZ	5925-823-0213	UC273U (80058) CONNECTOR, PLUG NO-REF-DESIG 1 RD WALE	EA	1	*	*	*	*		
PAOZZ	5925-823-0213	STRAIGHT, 1-7/8 IN LG X 5/8 IN DIA O/A; 80Mi (13511)	EA	1	*	*	*	*		
PAOZZ	5925-823-0213	CONNECTOR, PLUG NO-REF-DESIG 2 PARALLEL BLAC	EA	1	*	*	*	*		
PAOZZ	5935-241-1979	MALE. CONT. STRAIGHT, 1-5/32 IN LG 1 17/32 IN DIA;	EA	1	*	*	*	*		
XDOZZ		7057 (74545) CONNECTOR, RECEPTACLE NO-REF-DESIG 2 FLAT....	EA	1	*	*	*	*		
XDOZZ		4897 (74549) MALE CONT, STRAIGHT 1.593 IN LG X 1.281 IN D, 2	EA	1	*	*	*	*		
XDOZZ		3/8 IN MAX DIA FL: 80Mi (13511)	EA	1	*	*	*	*		V10
XDOZZ		CRYSTAL UNIT RECTIFYING NG V10.....	EA	1	*	*	*	*		V10
XDOZZ		IN210 (81350) CRYSTAL UNIT RECTIFYING E19.....	EA	1	*	*	*	*		E19
XDOZZ		IN210 (81350) CRYSTAL UNIT, RECTIFYING C31.....	EA	1	*	*	*	*		CR3
PAOZZ	5960-188-0968	IN219 (81350) CRYSTAL UNIT, RECTIFYING C31.....	EA	1	*	*	*	*		CR3
PAOZZ	5960-188-0968	IN219 (81350) CRYSTAL UNIT, RECTIFYING C31.....	EA	1	*	*	*	*		V7

SECTION III

TM11-6625-327-20P

(1) SYMBOL CODE	(2) EQUIPMENT NUMBER	(3) DESCRIPTION REFERENCE NUMBER & MFR CODE	(4) USABLE ON CODE	(5) UNIT OF MEAS	(6) QTY. INC IN UNIT	(7) 15-DAY ORGANIZATIONAL MAINTENANCE ALLOW				(8) ILLUSTRATION		
						(a) 1-5	(b) 6-20	(c) 21-50	(d) 51-300	(a) FIGURE NO.	(b) ITEM NO.	
PAQZZ	5960-130-308	ELECTRON TUBE OC3W (81350)	V9	BWT	EA	1	*	*	*	*		V9
PAQZZ	5960-130-308	ELECTRON TUBE SC3W (81350)	V3	BWU,BWV	EA	1	*	*	*	*		V3
PAQZZ	5960-130-308	ELECTRON TUBE 003W (81350)	V6	BWS	EA	1	*	*	*	*		V6
PAQZZ	5960-130-308	ELECTRON TUBE 003W (81350)	V8	BW	EA	1	*	*	*	*		V8
PAQZZ	5960-130-308	ELECTRON TUBE 003W (81350)	V2	BWU,BWV	EA	1	*	*	*	*		V2
PAQZZ	5960-130-308	ELECTRON TUBE 2C40 (81350)	V9	BWS,WU,BWV	EA	1	*	*	*	*		V9
PAQZZ	5960-130-308	ELECTRON TUBE 2040 (81350)	V6	BWT	EA	1	*	*	*	*		V6
XDOZZ	5960-130-308	ELECTRON TUBE 5U6G (81350)	V8	BWS	EA	1	*	*	*	*		V8
PAQZZ	5960-130-308	ELECTRON TUBE TY3WGT (81350)	V7	BWT	EA	1	*	*	*	*		V7
PAQZZ	5960-130-308	0213 ELECTRON TUBE 73WGT (81350)	V1	BWU,BWV	EA	1	*	*	*	*		V1
PAQZZ	5960-130-308	0565 ELECTRON TUBE 6A07Y (81350)	V4		EA	1	*	*	*	*		V4
PAQZZ	5960-130-308	ELECTRON TUBE 6A07Y (81350)	V5	BWT	EA	1	*	*	*	*		V5
PAQZZ	5960-130-308	ELECTRIC TUBE 6I07V (81350)	V8	BWU,BWV	EA	1	*	*	*	*		V8
XDOZZ	5960-130-308	ELECTRON TUBE 6SN7WG7 (81350)	V1	BUS	EA	4	*	*	*	*		V1
XDOZZ	5960-130-308	ELECTRON TUBE 6SN7WGT (81350)	V2	BWS	EA	REF	*	*	*	*		V2
XDOZZ	5960-130-308	ELECTRON TUBE 6SN7WGT (81350)	V3	BWS	EA	REF	*	*	*	*		V3
XDOZZ	5960-130-308	ELECTRON TUBE USN7WGT (81350)	V5		EA	REF	*	*	*	*		V5
XDOZZ	5960-130-308	ELECTRON TUBE FSN7WGT (81350)	V1A	BWT	EA	0	*	*	*	*		V1A
XDOZZ	5960-130-308	ELECTRON TUBE 6SN7WGT (81350)	V18	BWT	EA	REF	*	*	*	*		V18
XDOZZ	5960-130-308	ELECTRON TUBE 8SN7WGT (81350)	V2A	BWT	EA	REF	*	*	*	*		V2A
XDOZZ	5960-130-308	ELECTRON TUBE 6SN7RGT (81350)	V2B	BWT	EA	REF	*	*	*	*		V2B
XDOZZ	5960-130-308	ELECTRON TUBE 6SN7WGT (81350)	V3A	BUT	EA	REF	*	*	*	*		V3A
XDOZZ	5960-130-308	ELECTRON TUBE 6SN7WGT (81350)	V3B	BWT	EA	REF	*	*	*	*		V3B
XDOZZ	5960-130-308	ELECTRON TUBE 6SN7WGT (81350)	V4A	BWT	EA	REF	*	*	*	*		V4A
XDOZZ	5960-130-308	ELECTRON TUBE 6SN7WGT (81350)	V4B	BWT	EA	REF	*	*	*	*		V4B
XDOZZ	5960-130-308	ELECTRON TUBE 6SN7WGT (81350)	V4	BWU,BWV	EA	4	*	*	*	*		V4
XDOZZ	5960-130-308	ELECTRON TUBE 6SN7WGT (81350)	V5	BWU,BWV	EA	REF	*	*	*	*		V5
XDOZZ	5960-130-308	ELECTRON TUBE 6SN7WGT (81350)	V6	BWU,BWV	EA	REF	*	*	*	*		V6
XDOZZ	5960-130-308	ELECTRON TUBE 6SN7WGT (81350)	V7	BWU,BWV	EA	REF	*	*	*	*		V7
XDOZZ	5960-130-308	FUSE, CARTRIDGE LG K 1/4 IN DIA; 1206-36 (75915)	FL 1/32 AMP, 250 V, 1-1/4 IN	BWS,BWT	EA	1	*	*	*	*		F2
PAQZZ	5920-280-8342	FUSE F3 1 AMP, USED ONLY IF INSTR IS OPERATED FROM 230 V LINE; FU26 (80063)		BWU,BWV	EA	2	*	*	*	*		F3
PAQZZ	5920-280-8342	FUSE, F4 1 AMP USE3 ONLY IF INSTR IS OPERATED FROM 230 V LINE; FU26 (80063)		BWU,BWV	EA	REF	*	*	*	*		F4
PAQZZ	5920-280-4960	FUSE, CARTRIDGE x 1/4 IN DIA; F02A250V2A (81349J)	F1 2 AMP, 250 V, 1-1/4 IN LG	BWU,BWV	EA	1	*	*	*	*		F1
PAQZZ	5920-010-5652	FUSE, CARTRIDGE X 1/4 IN DIA; 312001 (75915)	F1 3 AMP, 250 V, 1-1/4 IN LG	BWU,BWV	EA	1	*	*	*	*		F1
PAQZZ	5920-010-6832	FUSE, CARTRIDGE IN DIA; 312001 (75915)	F1 3 AMP, 250 V, 1-1/4 IN LG	BWU,BWV	EA	2	*	*	*	*		F1
PAQZZ	5920-010-6652	FUSE, CARTRIDGE x 1/4 IN DIA; 312001 (75915)	FL 3 AMP, 250 V, 1-1/4 IN LG	BWU,BWV	EA	REF	*	*	*	*		F2

SECTION III

TM11-6625-327-20P

(1) SMR CODE	(2) FEDERAL STOCK NUMBER	(3) DESCRIPTION REFERENCE NUMBER & MFR CODE      USABLE ON CODE		(4) UNIT OF MEAS	(5) QTY. INC IN UNIT	(6) 15-DAY ORGANIZATIONAL MAINTENANCE ALW				(7) ILLUSTRATION	
						(a)	(b)	(c)	(d)	(a)	(b)
						1-5	6-20	21-50	51-100	FIGURE NO.	ITEM NO.
PADZZ	6625-224-4385	HORN, ANTENNA	E20	EA	1	*	*	*	*		E20
		AT 67AP (80058)									
PAQZZ	6625-224-4385	HORN, ADAPTER	E1k	EA	1	*	*	*	*		E16
		AT 67AP 180058)									
PADZZ	6625-224-4385	HORN, ANTENNA	E17	EA	1	*	*	*	*		E17
		AT 67AP (80058)									
PACZZ	5355-160-6851	KNOB E19 BAR, BLACK BAKELITE, FOR 1/4 DIA, SHAFT, 1-1/4 IN LG X 1/2 IN WD X 5/8 IN D; HRP (7171313)		EA	1	*	*	*	*		E19
PACZZ	5355-160-6851	KNOB E14 BAR, BLACK BAKELITE, FOR 1/4 IN DIA, SHAFT, 1-P/4 IN LG X 1/2 IN WD X 5/8 IN D; HRP (71313)		EA	1	*	*	*	*		E14
XDCZZ		KNOB E17 FLUTED, BLACK BAKELITE, FOR 13/64 IN DIA SHAFT, ARROW MARKING, 1-1/8 IN DIA X 9/32 IN THK; 6537 (80375)		EA	1	*	*	*	*		E17
XDCZZ		KNOB E12 FLUTED, BLACK BAKELITE, FOR 13/64 IN DIA SHAFT, ARROW MARKING, 1-1/8 IN DIA X 9/32 IN THK; 6537 (80375)		EA	1	*	*	*	*		E12
XDCZZ+		KNOB E11 RD. BLACK BAKELITE, FOR 1/4 IN DIA, SHAFT, 2 SETSCREWS. ARROW MARKING; SC845405 (80063)		EA	1	*	*	*	*		E11
XDCZZ		KNOB E18 OCTAGONAL- BLACK BAKELITE, FOR 1/4 IN DIA SHAFT, 1-5/8 IN DIA X 11/32 IN THK O/A; SC845406 (80063)		EA	1	*	*	*	*		E18
XDCZZ		KNOB E13 OCTAGONAL, BLACK BAKELITE. FOR 1/4 IN DIA SHAFT. 1-5/8 IN DIA X 11/32 IN THK O/A; SC845405 (80063)		EA	1	*	*	*	*		E13
XDCZZ		KNOB E14 RD, BLACK ALUMINUM, FOR 3/16 IN DIA, SHAFT, 1-5/16 IN DIA X 11/16 IN THK; 10715 (00781)		EA	2	*	*	*	*		E14
XDCZZ		KNOB E15 RD. BLACK ALUMINUM,, FOR 3/16 IN DIA, SHAFT. 1-5/16 IN DIA X 11/16 IN THK; 10715 (00781)		EA	REF	*	*	*	*		E15
PACZZ	5355-160-7109	KNOB NO-REF-DESIG RD. BLACK BAKELITE, FOR 1/4 IN DIA SHAFT, 11/16 IN DIA X 13/32 IN H; 1450C2 (72512)		EA	1	*	*	*	*		E13
PACZZ	5355-160-5964	KNOB E13 RD. W/FLUTCH EDGE, BLACK BAKELITE... FOR 1/4 IN DIA SHAFT, 5/8 IN H X 1-1/8 IN DIA, DOUBLE SETSCREW; 308-64-40269 (75376)		EA	4	*	*	*	*		E13
PACZZ	5355-160-5964	KNOB E14 RD. W/FLUTCH, EDGE. BLACK BAKELITE, ... FOR 1/4 IN DIA SHAFT. 5/8 IN H X 1-1/8 IN DIA, DOUBLE SETSCREW; S308-64-40269 (75376)		EA	REF	*	*	*	*		E14
PACZZ	5355-160-5964	KNOB E15 RD. W/FLUTCH EDGE, BLACK BAKELITE... FOR 1/4 IN DIA SHAFT, 5/8 IN H X 1-1/8 IN DIA, DOUBLE SETSCREW; S308-64-40269 (75376)		EA	REF	*	*	*	*		E15
PACZZ	5355-160-5964	KNOB E16 RD, WFLUTCH EDGE, BLACK BAKELITE, FOR 1/4 IN DIA SHAFT, 5/8 IN H X 1-1/8 IN DIA, DOUBLE SETSCREW; S308-64-40269 (75376)		EA	REF	*	*	*	*		E16
PACZZ	5355-160-5964	KNOB E7 RD, WFLUTCH EDGE, BLACK BAKELITE... FOR 1/4 IN DIA SHAFT, 5/8 IN H X 1-1/8 IN DIA, DOUBLE SETSCREW; S303-64-40269 (75370)		EA	6	*	*	*	*		E7
PACZZ	5355-160-4964	KNOB E8 RD, W/FLUTCH EDGE, BLACK BAKELITE, ... FOR 1/4 IN DIA SHAFT, 5/8 IN H X 1-1/8 IN DIA, DOUBLE SETSCREW; S308-64-40269 (75376)		EA	REF	*	*	*	*		E8
PACZZ	5355-160-5964	KNOB E9 RD. W/FLUTCH EDGE, BLACK BAKELITE... FOR 1/4 IN DIA SHAFT, 5/8 IN H X 1-1/8 IN DIA, DOUBLE SETSCREW; S308-64-40269 (75376)		EA	REF	*	*	*	*		E9
PACZZ	5355-160-5964	KNOB E10 RD, W/FLUTCH EDGE, BLACK BAKELITE... FOR 1/4 IN DIA SHAFT, 5/8 IN H X 1-1/8 IN DIA, DOUBLE SETSCREW; S308-64-40269 (75376)		EA	REF	*	*	*	*		E10
PACZZ	5355-160-5964	KNOB E11 RD, W/FLUTCH EDGE, BLACK BAKELITE... FOR 1/4 IN DIA SHAFT 5/8 IN H X 1-1/8 IN DIA, DOUBLE SETSCREW; S308-64-40269 (75376)		EA	REF	*	*	*	*		E11
PACZZ	5955-160-5964	KNOB E12 RD, W/FLUTCH EDGE, BLACK BAKELITE... FOR 1/4 IN DIA SHAFT, 5/8 IN W X 1-1/8 IN DIA, DOUBLE SETSCREW; S308-64-40269 (75376)		EA	REF	*	*	*	*		E12
PACZZ	5355-160-5964	KNOB E13 RD, W/FLUTCH EDGE, BLACK BAKELITE... FOR 1/4 IN DIA SHAFT, 5/8 IN W X 1-1/8 IN DIA, DOUBLE SETSCREW; S308-64-40269 (75376)		EA	3	*	*	*	*		E10A

CONTINUED

400 FORM

ORGANIZATIONAL REPAIR PARTS TOOLS LIST



SECTION III

TM11-6625-327-20P

QTY INC IN UNIT	UNIT OF MEAS	DESCRIPTION	REFERENCE NUMBER & MFR CODE	USABLE ON CODE	15 DAY ORGANIZATIONAL MAINTENANCE ALLOW					ILLUSTRATION		
					(a)	(b)	(c)	(d)	(e)	(f)	(g)	(h)
					1.5	6.20	21.50	51.100				
CONTINUED												
		FOR 1/4 IN DIA SHAFT, 5/8 IN H X 1-1/8 IN DIA, DOUBLE SETSCREW; S308-64-40269 (75376) BwU,BwV				*	*	*	*			
PACZZ	5355-160-5964	KNURLED ROD, W/FLUTCH EDGE, BLACK BAKELITE... FOR 1/4 IN DIA SHAFT, 5/8 IN H X 1-1/8 IN DIA, DOUBLE SETSCREW; S308-64-40269 (75376) BwU,BwV			EA	REF	*	*	*	*		F108
		FOR 1/4 IN DIA SHAFT, 5/8 IN H X 1-1/8 IN DIA, DOUBLE SETSCREW; S308-64-40269 (75376) BwU,BwV					*	*	*	*		
PACZZ	5355-160-5964	KNURLED ROD, W/FLUTCH EDGE, BLACK BAKELITE... FOR 1/4 IN DIA SHAFT, 5/8 IN H X 1-1/8 IN DIA, DOUBLE SETSCREW; S308-64-40269 (75376) BwU,BwV			EA	REF	*	*	*	*		F100
		LAMP 11 6-H 0.15 AMP, 1 CONT, MINIATURE... BAYONET BASE; MS15571-2 (56906) BwU,BwV			EA	1	*	*	*	*		11
		LENS, INDICATOR LIGHT AC-REF-DESIG LENS, 1/2... IN DIA, SMOOTH FACE, MARKED BRIGHT & DIM, EXT THD MTG DIM OF SHANK 9/16-27 X 3/16 IN LG, 15/16 IN LG X 15/16 IN LG C/A; 208111 (72615) BwS,BwT			EA	1	*	*	*	*		
		POINTER, INDICATOR AC-REF-DESIG 1 LINE DIAL... INDICATOR, 5/16 IN DIA HEAD W/6-32 X 1/2 IN LG AXIAL SCREWS; IN1736 (71218) BwS			EA	2	*	*	*	*		
		RESISTOR, FIXED, WIRE WOUND R45 6800 OHM... PURM5PCT, 20 W, 1-15/16 IN LG X 21/32 IN OD; 20F (56289) BwS			EA	1	*	*	*	*		R45
		RESISTOR, THERMAL R40 DISC TYPE MTC CN TIN PL BRASS PLATE, 725 OHM, 1-1/4 IN LG X 7/8 IN WD X 0.040 IN THK; D168391-765 (64959) BwS			EA	1	*	*	*	*		29 R40
		RESISTOR, THERMAL R49 DISC TYPE MTC CN TIN PL BRASS PLATE, 725 OHM, 1-1/4 IN LG X 7/8 IN WD X 0.040 IN THK; D168391-765 (64959) BwS			EA	1	*	*	*	*		11 R49
		RESISTOR, THERMAL R15 DISC TYPE MTC CN TIN PL BRASS PLATE, 725 OHM, 1-1/4 IN LG X 7/8 IN WD X 0.040 IN THK; D168391-765 (64959) BwT			EA	1	*	*	*	*		11 R15
		RESISTOR, THERMAL R39 803 OHM, 1 W, DISK CF... THERMISTOR MATL SCLDERED TO METAL PLATE, 1-1/4 IN LG X 7/8 IN WD; D168392 (64959) BwU,BwV			EA	1	*	*	*	*		29 R39
		RESISTOR, THERMAL R55 803 OHM, 1 W, DISK CF... THERMISTOR MATL SCLDERED TO METAL PLATE, 1-1/4 IN LG X 7/8 IN WD; D168392 (64959) BwS			EA	1	*	*	*	*		11 R55
		RESISTOR, THERMAL R19 803 OHM, 1 W, DISK CF... THERMISTOR MATL SCLDERED TO METAL PLATE, 1-1/4 IN LG X 7/8 IN WD; D168392 (64959) BwT			EA	1	*	*	*	*		11 R19
		RESISTOR, THERMAL R35 2000 3HM, 3/8 IN LG X... 9/64 IN DIA; D163903 (64959) BwU,BwV			EA	1	*	*	*	*		29 R35
		RESISTOR, THERMAL R57 2000 3HM, 3/8 IN LG X... 5/64 IN DIA; D163903 (64959) BwS			EA	1	*	*	*	*		11 R57
		RESISTOR, THERMAL R22 2000 3HM, 3/8 IN LG X... 9/64 IN DIA; D163903 (64959) BwT			EA	1	*	*	*	*		11 R22
		SCREWS, CAPTIVE H11 RD, 8-32 NC, KNURLED HEAD; 29/32 IN LG; A1542 (78714) BwU,BwV			EA	10	*	*	*	*		H11
		SCREWS, CAPTIVE H12 RD, 8-32 NC, KNURLED HEAD; 29/32 IN LG; A1542 (78714) BwS			EA	REF	*	*	*	*		H12
		SCREWS, CAPTIVE H13 RD, 8-32 NC, KNURLED HEAD; 29/32 IN LG; A1542 (78714) BwS			EA	REF	*	*	*	*		H13
		SCREWS, CAPTIVE H14 RD, 8-32 NC, KNURLED HEAD; 29/32 IN LG; A1542 (78714) BwS			EA	REF	*	*	*	*		H14
		SCREWS, CAPTIVE H15 RD, 8-32 NC, KNURLED HEAD; 29/32 IN LG; A1542 (78714) BwS			EA	REF	*	*	*	*		H15
		SCREWS, CAPTIVE H36 RD, 8-32 NC, KNURLED HEAD; 29/32 IN LG; A1542 (78714) BwS			EA	REF	*	*	*	*		H36
		SCREWS, CAPTIVE H37 RD, 8-32 NC, KNURLED HEAD; 29/32 IN LG; A1542 (78714) BwS			EA	REF	*	*	*	*		H37
CONTINUED												

SECTION III

TM11-6625-327-20P

(1) SMR CODE	(2) FEDERAL STOCK NUMBER	(3) DESCRIPTION		(4) UNIT OF MEAS	(5) QTY. INC IN UNIT	(6) 15 DAY ORGANIZATIONAL MAINTENANCE ALW				(7) ILLUSTRATION			
						REFERENCE NUMBER & MFF CODE	USABLE ON CODE	(a)	(b)	(c)	(d)	(a) FIGURE NO.	(b) ITEM I.C.
								1-5	6-20	21-50	51-100		
CONTINUED													
X0000	29/32 IN LG; A1542 (78714)	H38	RD, 8-32 NC, KNURLED HEAD,	BWS EA	REF	*	*	*	*		H38		
X0000	29/32 IN LG; A1542 (78714)	H39	RD, 8-32 NC, KNURLED HEAD,	BWS EA	REF	*	*	*	*		H39		
X0000	29/32 IN LG; A1542 (18714)	H40	RD, 8-32 NC, KNURLED HEAD,	BWS EA	REF	*	*	*	*		H40		
X0000	29/32 IN LG; A1542 (78714)	H3	RD, 8-32 NC, KNURLED HEAD,	BWS EA		*	*	*	*		H3		
	29/33 IN LG; A1542 (8714)			BWT									

INDEX- FEDERAL STOCK AND REFERENCE NUMBER  
CROSS-REFERENCE FIGURE NUMBER AND ITEM NUMBER

STOCK NUMBER	FIGURE NO.	ITEM NO.	STOCK NUMBER	FIGURE NO.	ITEM NO.
5355-160-5964		E10A	5935-199-1806		E20
5355-160-5964		E10B	5935-199-1806		E22
5355-160-5964		E10C	5935-241-1979		
5355-160-5964		E10	5935-539-0851		E21
5355-160-5964		E11	5935-539-0851		E22
5355-160-5964		E12	5935-539-0851		E23
5355-160-5964		E13	5935-642-3593		E17
5355-160-5964		E14	5935-642-3593		E20
5355-160-5964		E15	5935-642-3593		E21
5355-160-5964		E16	5935-643-9875		E21
5355-160-5964		E7	5935-823-0213		
5355-160-5964		E8	5960-188-0968		V3
5355-160-5964		E9	5960-188-0968		V7
5355-160-6851		E14	5960-188-0968		V9
5355-160-6851		E19	5960-188-8565		V4
5355-160-7109			5960-188-8565		V5
5905-175-5249	11	R22	5960-188-8565		V8
5905-175-5249	11	R57	5960-193-5085		V2
5905-175-5249	29	R35	5960-193-5085		V6
5905-309-5536	11	R15	5960-193-5085		V8
5905-309-5536	29	R40	5960-262-0218		V1
5905-309-5536	11	R49	5960-262-0218		V7
5920-010-6652		F1	5960-577-3101		V6
5920-010-6652		F2	5960-577-3101		V9
5920-280-4960		F1	5999-244-5150		
5920-280-8342		F3	6210-643-0683		
5920-280-8342		F4	6210-865-3450		
5935-149-2134		E23	6625-224-4385		E16
5935-149-2134		E19	6625-224-4385		E17
5935-199-1806		E18	6625-224-4385		E20

REFERENCE NO.	MFR CODE	FIG. NO.	ITEM NO.	REFERENCE NO.	MFR CODE	FIG. NO.	ITEM NO.
AT67AP	80058		E16	D163903	64959	29	R35
AT67AP	80058		E17	D168391-765	64959	11	R15
AT67AP	80058		E20	D168391-765	64959	11	R49
A1542	78714		H3	D168391-765	64959	29	R40
A1542	78714		H11	D168392	64959	11	R19
A1542	78714		H12	D168392	64959	11	R55
A1542	78714		H13	D168392	64959	29	R39
A1542	78714		H14	FU26	80063		F3
A1542	78714		H15	FU26	80063		F4
A1542	78714		H16	F02A250V2A	81348		F1
A1542	78714		H37	HKPR	10133		
A1542	78714		H38	HRP	71313		E14
A1542	78714		H39	HRP	71313		E19
A1542	78714		H40	MS15571-2	96906		I1
OX337U	80058		W2	SCB45405	80063		E11
D163903	64959	11	R22	SCB45405	80063		E13
D163903	64959	11	R57	SCB45406	80063		E18

## SECTION V.

TM11-6625-327-20P

REFERENCE NO.	MFR CODE	FIG. NO.	ITEM NO.	REFERENCE NO.	MFR CODE	FIG. NO.	ITEM NO.
S308-64-40269	75370		E7	1N21B	81350		V10
S308-64-40269	75376		E8	10715	00781		E14
S308-64-40269	75376		E9	10715	00781		E15
S308-64-40269	75376		E10	1216-3AG	75915		F2
S308-64-40269	75376		E11	1450C2	72512		
S308-64-40269	75376		E12	2C40	81350		V6
S308-64-40269	75376		E13	2C40	81350		V9
S308-64-40269	75376		E14	20B111	72619		
S308-64-40269	75376		E15	20F	56289		R45
S308-64-40269	75376		E16	312001	75915		F1
S308-64-40269	75376		E10A	312001	75915		F2
S308-64-40269	75376		E10B	4897	74549		
S308-64-40269	75376		E10C	5U4G	81350		V8
UG119UD	80058		E24	5Y3WGT	81350		V1
UG119UP	80058		E18	5Y3WGT	81350		V7
UG119UP	80058		E25	6AG7Y	81350		V4
UG131U	80058		E17	6AG7Y	81350		V5
UG131U	80058		E20	6AG7Y	81350		V8
UG131U	80058		E21	6SN7WGT	81350		V1
UG255U	80058		E19	6SN7WGT	81350		V2
UG273U	80058		E23	6SN7WGT	81350		V3
UG28AU	80058		E18	6SN7WGT	81350		V4
UG28AU	80058		E20	6SN7WGT	81350		V5
UG28AU	80058		E22	6SN7WGT	81350		V6
UG29BU	80058		E21	6SN7WGT	81350		V7
UG57BU	80058		E21	6SN7WGT	81350		V1A
UG57BU	80058		E22	6SN7WGT	81350		V1B
UG57BU	80058		E23	6SN7WGT	81350		V2A
ZZZZZ	ZZZZZ			6SN7WGT	81350		V2B
OC3W	81350		V3	6SN7WGT	81350		V3A
OC3W	81350		V7	6SN7WGT	81350		V3B
OC3W	81350		V9	6SN7WGT	81350		V4A
OD3W	81350		V2	6SN7WGT	81350		V4B
OD3W	81350		V6	6537	80375		E12
OD3W	81350		V8	6537	80375		E17
1N1736	71218			7057	74545		
1N21B	81350		CR1	80M	13511		
1N21B	81350		E19				

By Order of the Secretary of the Army:

**FRED C. WEYAND**  
*General, United States Army*  
*Chief of Staff*

Official:

**VERNE L. BOWERS**  
*Major General, United States Army*  
*The Adjutant General*

Distribution:

*Active Army:*

USASA (2)  
Dir of Trans (1)  
COE (1)  
TSG (1)  
USAARENBD (1)  
AMC (1)  
TRADOC (2)  
ARADCOM (2)  
ARADCOM Rgn (2)  
OS Maj Comds (4)  
LOGCOMDS (3)  
MICOM (2)  
TECOM (2)  
USACC (4)  
MDW (1)  
Armies (2)  
Comds (2)  
HISA (Ft Monmouth) (43)  
Svc Colleges (1)  
USASESS (5)  
USAADS (2)  
USAFAS (2)  
USAARMS (2)  
USAIS (2)  
USAES (2)  
USAINTCS (3)  
WRAMC (1)  
ATS (1)  
Fort Gordon (10)  
Fort Huachuca (10)  
WSMR (1)  
Fort Carson (5)

Ft Richardson (ECOM Ofc) (2)  
Army Dep (1) except  
LBAD (14)  
SAAD (30)  
TOAD (14)  
ATAD (10)  
USA Dep (2)  
Sig Sec USA Dep (2)  
Sig Dep (2)  
Sig FLDMS (1)  
USAERDAA (1)  
USAERDAW (1)  
MAAG (1)  
USARMIS (1)  
Units org under fol TOE  
(1 copy each unit):  
6-100  
6-200  
6-300  
6-575  
6-577  
7  
11-16  
11-97  
11-98  
11-117  
11-500(AA-AC)  
17  
2-56  
39-51  
57  
6-525

NG: NONE.

USAR: None.

For explanation of abbreviations used, see AR 310-50.

DEPARTMENT OF THE ARMY  
5 ARMY AG PUBLICATIONS CENTER  
1655 WOODSON ROAD  
ST. LOUIS, MISSOURI 63114  
OFFICIAL BUSINESS  
PENALTY FOR PRIVATE USE \$300

POSTAGE AND FEES PAID  
DEPARTMENT OF THE ARMY  
DOD 114

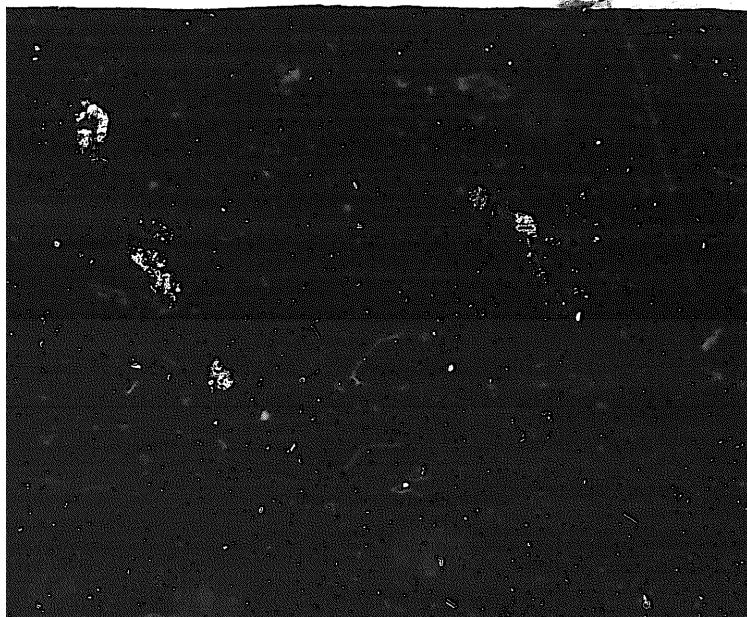


**END**

9-18-83

**DATE**

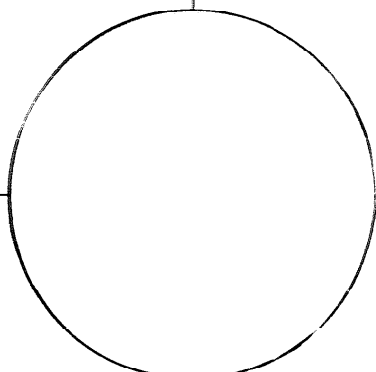
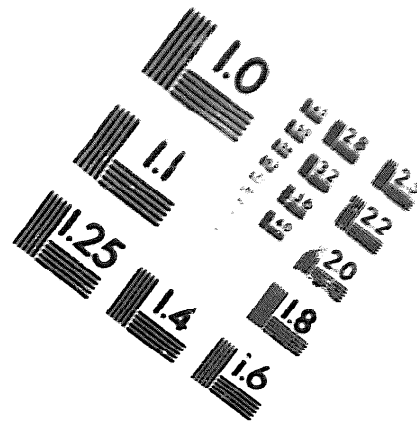
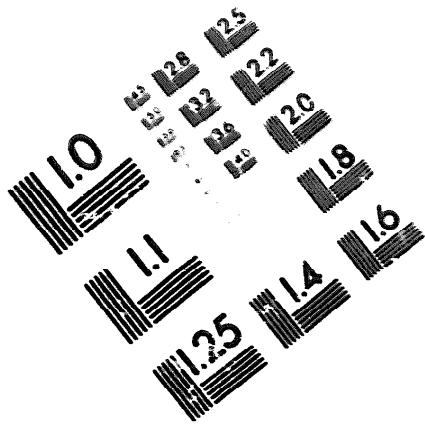






DEPARTMENT OF THE ARMY

MICROFORM TEST TARGET



150 MM

1.0 mm (e= .81 mm)

ABCDEFGHIJKLMN OPQRSTUVWXYZ 1234567890  
abcdefghijklmnopqrstuvwxyz \$%&' /%# 1/2 1/4 3/4 — = + x & @ \*

1.5 mm (e= 1.09 mm)

ABCDEFGHIJKLMN OPQRSTUVWXYZ 1234567890  
abcdefghijklmnopqrstuvwxyz \$%&' /%# 1/2 1/4 3/4 — = + x & @ \*

2.0 mm (e= 1.37 mm)

ABCDEFGHIJKLMN OPQRSTUVWXYZ  
abcdefghijklmnopqrstuvwxyz  
1234567890 \$%&' /%# 1/2 1/4 3/4 — = + x & @ \*

2.5 mm (e= 1.77 mm)

ABCDEFGHIJKLMN OPQRSTUVWXYZ  
abcdefghijklmnopqrstuvwxyz  
1234567890 \$%&' /%# 1/2 1/4 3/4 — = + x & @ \*

1.0 mm (e= .81 mm)

ABCDEFGHIJKLMN OPQRSTUVWXYZ 1234567890  
abcdefghijklmnopqrstuvwxyz \$%&' /%# 1/2 1/4 3/4 — = + x & @ \*

1.5 mm (e= 1.09 mm)

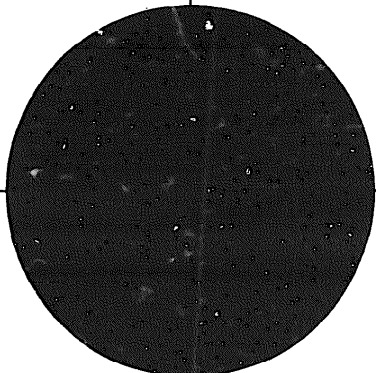
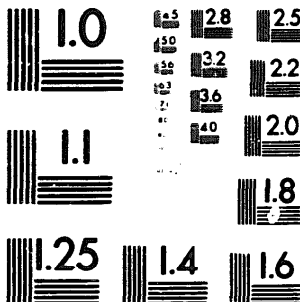
ABCDEFGHIJKLMN OPQRSTUVWXYZ 1234567890  
abcdefghijklmnopqrstuvwxyz \$%&' /%# 1/2 1/4 3/4 — = + x & @ \*

2.0 mm (e= 1.37 mm)

ABCDEFGHIJKLMN OPQRSTUVWXYZ  
abcdefghijklmnopqrstuvwxyz  
1234567890 \$%&' /%# 1/2 1/4 3/4 — = + x & @ \*

2.5 mm (e= 1.77 mm)

ABCDEFGHIJKLMN OPQRSTUVWXYZ  
abcdefghijklmnopqrstuvwxyz  
1234567890 \$%&' /%# 1/2 1/4 3/4 — = + x & @ \*



200 MM

250 MM

